

State of Wyoming Corner Record

(in compliance with the *CORNER PERPETUATION AND FILING ACT*, Wyoming Statutes, 2013, Section 33-29-901 through 33-29-910, and the Rules and Regulations of the Board of Registration for Professional Engineers and Professional Land Surveyors)

Reverse side of this form may be used if more space is needed.

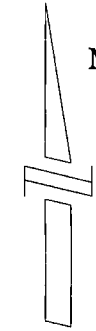
Record of original survey and citation of source of historical information (if corner is lost or obliterated). Description of corner monumentation evidence found and/or monument and accessories established to perpetuate the location of this corner. Sketch of relative location of monument, accessories, and reference points with course and distance to adjacent corner(s) (if determined in this survey). Method and rationale for reestablishment of lost or obliterated corner.

ORIGINAL MONUMENT Edmin James set a Granite Boulder 16"x10"x8" for corner in his Township Sruvey completed August 2nd, 1870.

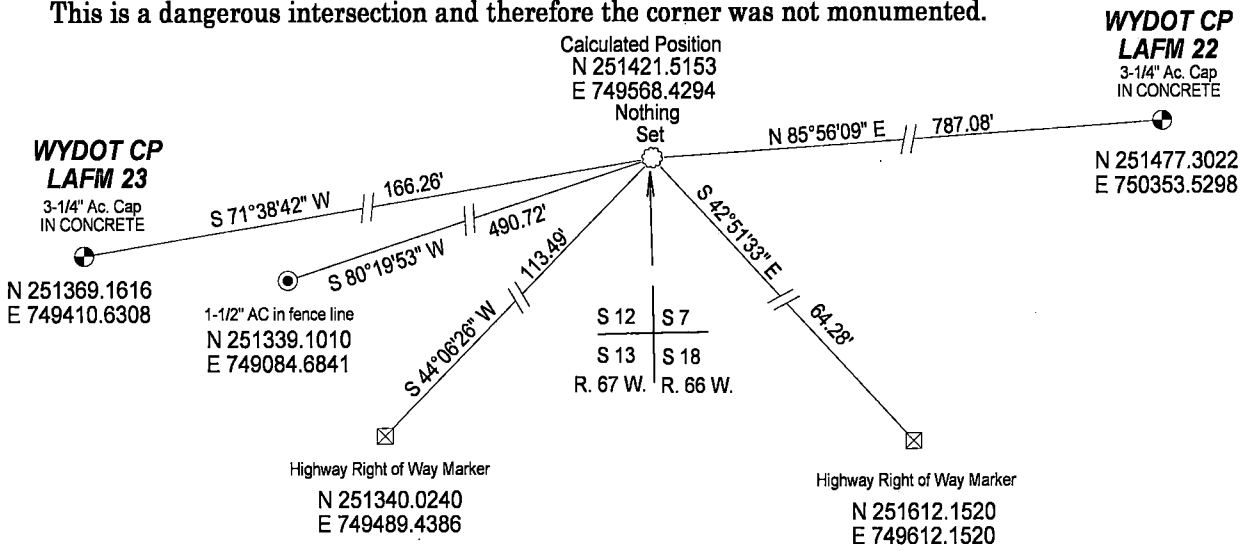
MONUMENT FOUND Previous Corner Record by John Steil (3-16-1990) set 5/8" by 24" rebar with 2" aluminum cap set below surface of road. Ties made to top of bolts on light pole bases in the cardinal directions. Point for section corner was established by obliterated methods from found monuments in the Monterey Ranchettes subdivision. Light pole bases have remained in position since 1990. Doyle Abrahamson corner record (12-13-1990) set additional references northeast of the corner. Due to construction since 1990, Abarhamson's monuments were not found.

SET ACCESSORIES Reference Points established are as shown below. The bearings are referenced to the Project Control for Yellowstone Road and 4 Mile Road Intersection and are State Plane Surface Coordinates modified by an adjustment factor of 1.000344597, NAD 83(2011).

NOTE Metal detection was done for the existing monument. Several faint locations were detected and due to the busy intersection, they were not recovered. The calculation for the position of the Section Corner was done from references set by John Steil. Several iterations were done to bring the calculated position of the corner in from the bolts. The position fits very well from Steil ties. The light poles will be removed for construction of the intersection. This is a dangerous intersection and therefore the corner was not monumented.



No Scale



Monument Inscription

Date of Field Work: June 29, 2021

Office Reference: Project 1108008

CROSS INDEX DIAGRAM

1	2	3	4	5	6	7	8	9	10	11	12	13	14	15	16	17	18	19	20	21	22	23	24	25
A	+	+	+	+	+	+	+	+	+	+	+	+	+	+	+	+	+	+	+	+	+	+	+	+
B	+	+	+	+	+	+	+	+	+	+	+	+	+	+	+	+	+	+	+	+	+	+	+	+
C	6	5	4	3	2	1	+	+	+	+	+	+	+	+	+	+	+	+	+	+	+	+	+	
D	+	+	+	+	+	+	+	+	+	+	+	+	+	+	+	+	+	+	+	+	+	+	+	+
E	+	+	+	+	+	+	+	+	+	+	+	+	+	+	+	+	+	+	+	+	+	+	+	+
F	+	+	+	+	+	+	+	+	+	+	+	+	+	+	+	+	+	+	+	+	+	+	+	+
G	7	8	9	10	11	12	+	+	+	+	+	+	+	+	+	+	+	+	+	+	+	+	+	+
H	+	+	+	+	+	+	+	+	+	+	+	+	+	+	+	+	+	+	+	+	+	+	+	+
I	+	+	+	+	+	+	+	+	+	+	+	+	+	+	+	+	+	+	+	+	+	+	+	+
J	+	+	+	+	+	+	+	+	+	+	+	+	+	+	+	+	+	+	+	+	+	+	+	+
K	+	+	+	+	+	+	+	+	+	+	+	+	+	+	+	+	+	+	+	+	+	+	+	+
L	18	17	16	15	14	13	+	+	+	+	+	+	+	+	+	+	+	+	+	+	+	+	+	+
M	+	+	+	+	+	+	+	+	+	+	+	+	+	+	+	+	+	+	+	+	+	+	+	+
N	+	+	+	+	+	+	+	+	+	+	+	+	+	+	+	+	+	+	+	+	+	+	+	+
O	+	+	+	+	+	+	+	+	+	+	+	+	+	+	+	+	+	+	+	+	+	+	+	+
P	+	+	+	+	+	+	+	+	+	+	+	+	+	+	+	+	+	+	+	+	+	+	+	+
Q	+	+	+	+	+	+	+	+	+	+	+	+	+	+	+	+	+	+	+	+	+	+	+	+
R	+	+	+	+	+	+	+	+	+	+	+	+	+	+	+	+	+	+	+	+	+	+	+	+
S	+	+	+	+	+	+	+	+	+	+	+	+	+	+	+	+	+	+	+	+	+	+	+	+
T	30	29	28	27	26	25	+	+	+	+	+	+	+	+	+	+	+	+	+	+	+	+	+	+
U	+	+	+	+	+	+	+	+	+	+	+	+	+	+	+	+	+	+	+	+	+	+	+	+
V	+	+	+	+	+	+	+	+	+	+	+	+	+	+	+	+	+	+	+	+	+	+	+	+
W	+	+	+	+	+	+	+	+	+	+	+	+	+	+	+	+	+	+	+	+	+	+	+	+
X	+	+	+	+	+	+	+	+	+	+	+	+	+	+	+	+	+	+	+	+	+	+	+	+
Y	+	+	+	+	+	+	+	+	+	+	+	+	+	+	+	+	+	+	+	+	+	+	+	+
Z	+	+	+	+	+	+	+	+	+	+	+	+	+	+	+	+	+	+	+	+	+	+	+	+
1	2	3	4	5	6	7	8	9	10	11	12	13	14	15	16	17	18	19	20	21	22	23	24	25

Land Surveyor/Firm/ Address

David G. Hammond, PLS

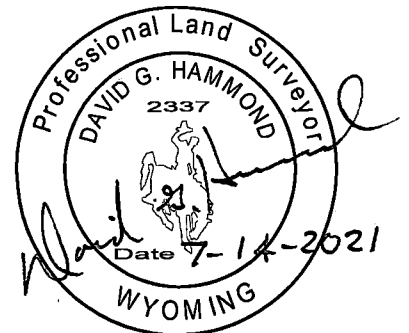
Wyoming Department of Transportation

3411 So. 3rd Street
Laramie, Wyoming 82070

Telephone Number 307-745-2135

This corner record was prepared by me or under my direction and supervision.

SEAL & SIGNATURE



RECP #: 815381
RECORDED 7/20/2021 AT 2:10 PM BK# 2745 PG# 2946
Debra K. Lee, CLERK OF LARAMIE COUNTY, WY PAGE 1 OF 1